



### FEATURES

- Levellers operable from inside the cabinet.
- Shelves adjustable every 32 mm.
- Capacity / gap between shelves for filing systems

## CUBE STORAGE

### DESCRIPTION

#### Frame

Sides, top and doors in 19-mm thick chipboard.

Base and shelves in 25-mm thick chipboard.

Recessed rear in 10-mm thick chipboard.

Chipboard, bonded with synthetic resins and especially designed for applications that require high bending strength, scratch resistance, stain resistance, etc., with an average density of 630 kg/m<sup>3</sup> as per EN 14323.

Laminated finish. 1-mm thick PVC edge as per UNE 56.843:01.

Easy and quick to assemble. All the parts are screwed on using eccentric connectors, except the rear, which clips on.

Hinged doors or low hinged doors

With hinges with 110° opening angle.

Aluminium-coloured moulded handles

Closing system

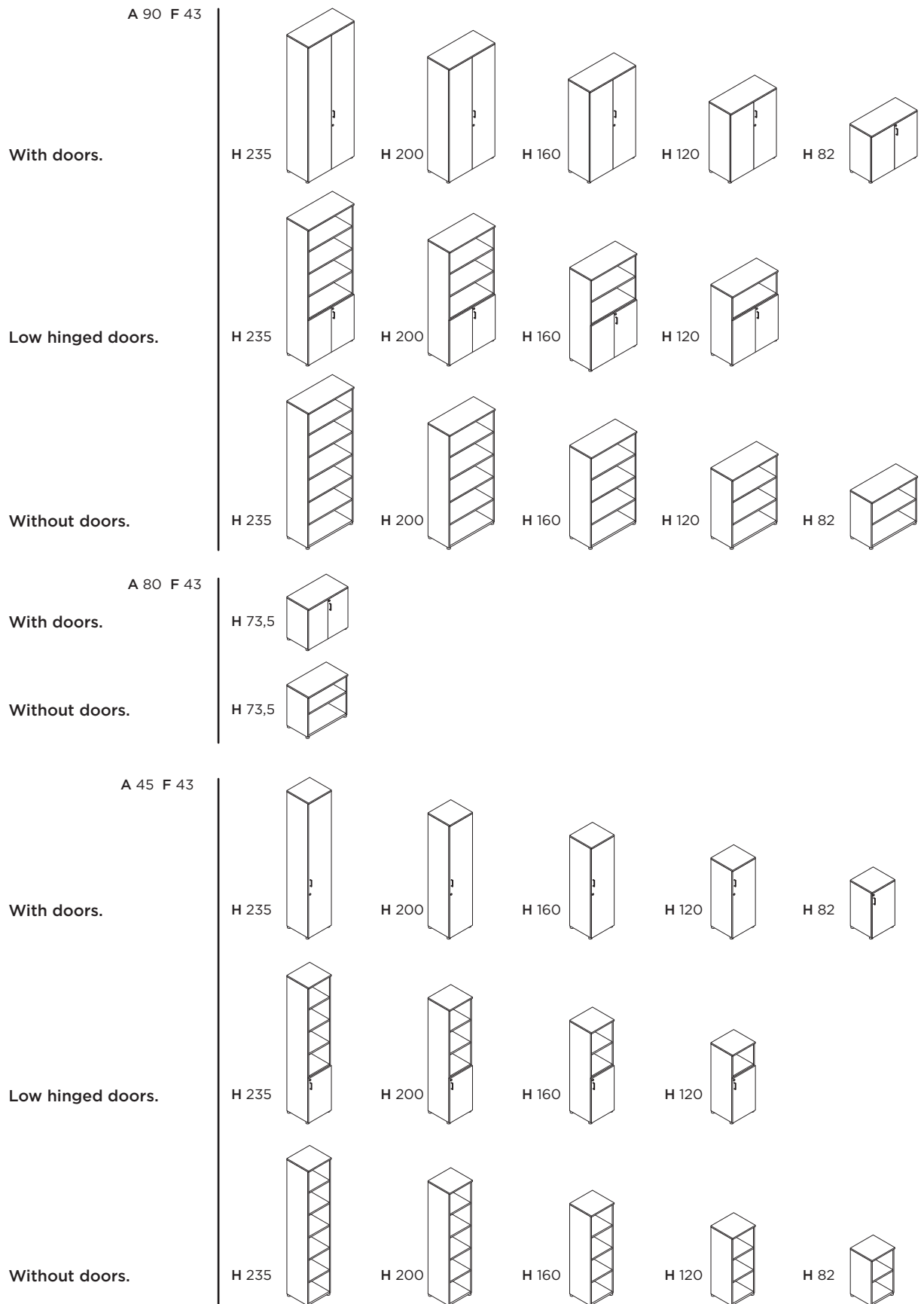
#### Options

- • Lock and hinged master key.
- • Top in chipboard with 19 or 25 mm-thick laminated finish.
- • 25mm-thick fixed or moveable metal shelves to hang folders.
- • Extractable filing system.



## CUBE STORAGE

### RANGE



## CUBE STORAGE

### FINISH

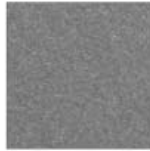
#### STRUCTURE

---

##### MFC LAMINATES



**MBA** White



**MGP** Platinum grey



**MGU** Ugu



**MRM** Oak

#### FRONT AND TOP

---

##### MFC LAMINATES



**MBA** White



**MGC** Light grey



**MGP** Platinum grey



**MGU** Ugu



**MAU** Brich



**MRM** Oak



**MAA** Acacia