

Movinord

Office Concept

SILENCE

THE SUCCESS OF SILENCE

Turn down the volume

Sound is noise pollution and it can have adverse effects on the human body such as sleeping disorders, stress, headaches, memory loss, aggressiveness and learning difficulties. In fact, the fight against noise is a question of public health, as well as keeping our surroundings comfortable and quiet. That's why acoustic performance is essential when designing a new building or refurbishing an existing one.

The acoustic project vinyl collection

Contents

2	Introduction	22	Sarlon Code Zero & Sarlon Uni – 19dB
4	All about turning down the volume	24	Sarlon Topography – 19dB
6	Sarlon Canyon – 15dB	26	The perfect match for every application
8	Sarlon Pepper – 15dB	27	Designed with our environment in mind
10	Sarlon Nuance – 17dB	28	More Forbo vinyl collections
12	Sarlon Linen – 17dB	28	Forbo, specialist of acoustic solutions
14	Sarlon Wood – 17dB	29	More Forbo Flooring
16	Sarlon Wood XL Modern – 19dB	30	Forbo FloorCare Method
18	Sarlon Cristal – 19dB	31	Technical specifications
20	Sarlon Concrete – 19dB		



For schools, proper acoustic performance creates a quiet atmosphere (even if children are running in the corridors) to help children learn. In offices, it reduces stress and aggressiveness. And for hospitals and elderly homes, more peaceful environments help people recover – even if the medical staff is active and noisy.

The best way to reduce sound is at the source. That's why acoustic floors are key when it comes to reducing noise in buildings.

Forbo Flooring is a specialist in acoustic products. We have more than 32 years' experience and specific industry knowledge that allows us to deliver best-in-class acoustic flooring for every application.

- Compact acoustic Sarlon 15dB
- Compact acoustic Sarlon 17dB
- Comfort acoustic Sarlon 19dB

Each one of our products takes two key criteria into account:

- Impact sound reduction
- Residual indentation

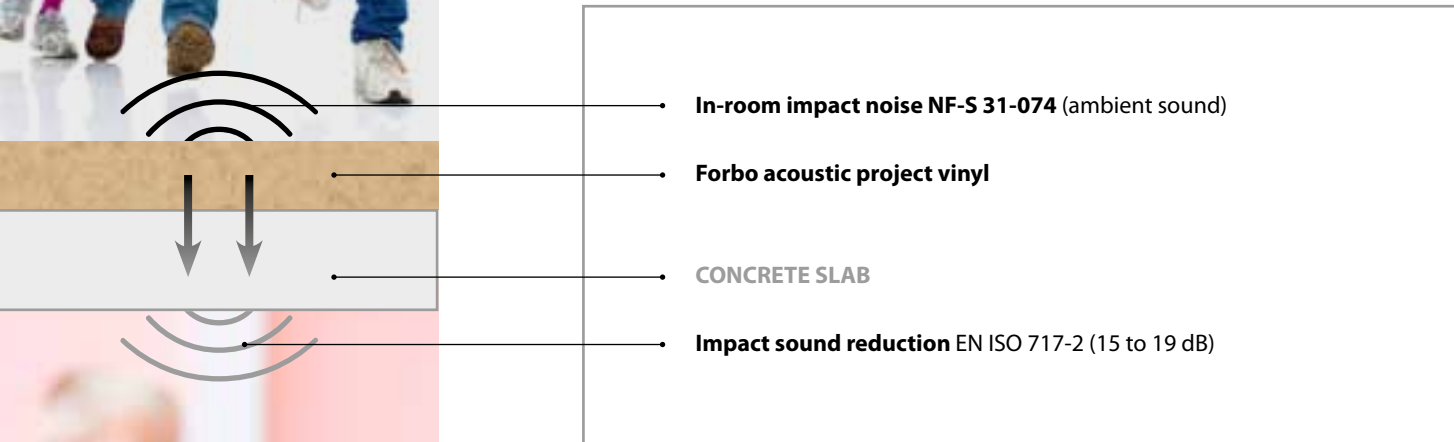
Depending on installation location, residual indentation is a vital consideration when selecting an acoustic product.

Compact acoustic product means products having a behavior close to compact products in terms of indentation and easy rolling floor. Always look at both criteria when choosing an acoustic floor and find the right balance for your application between acoustic performance and indentation resistance.

All about turning down **the volume**



The floor coverings in the Forbo acoustic project vinyl collection have been developed and tested to maximize impact sound reduction while meeting the needs of heavy traffic commercial areas. Forbo acoustic project vinyls contribute to lowering noise disturbance within a building in a number of ways. The result is a more comfortable environment.



Impact sound reduction

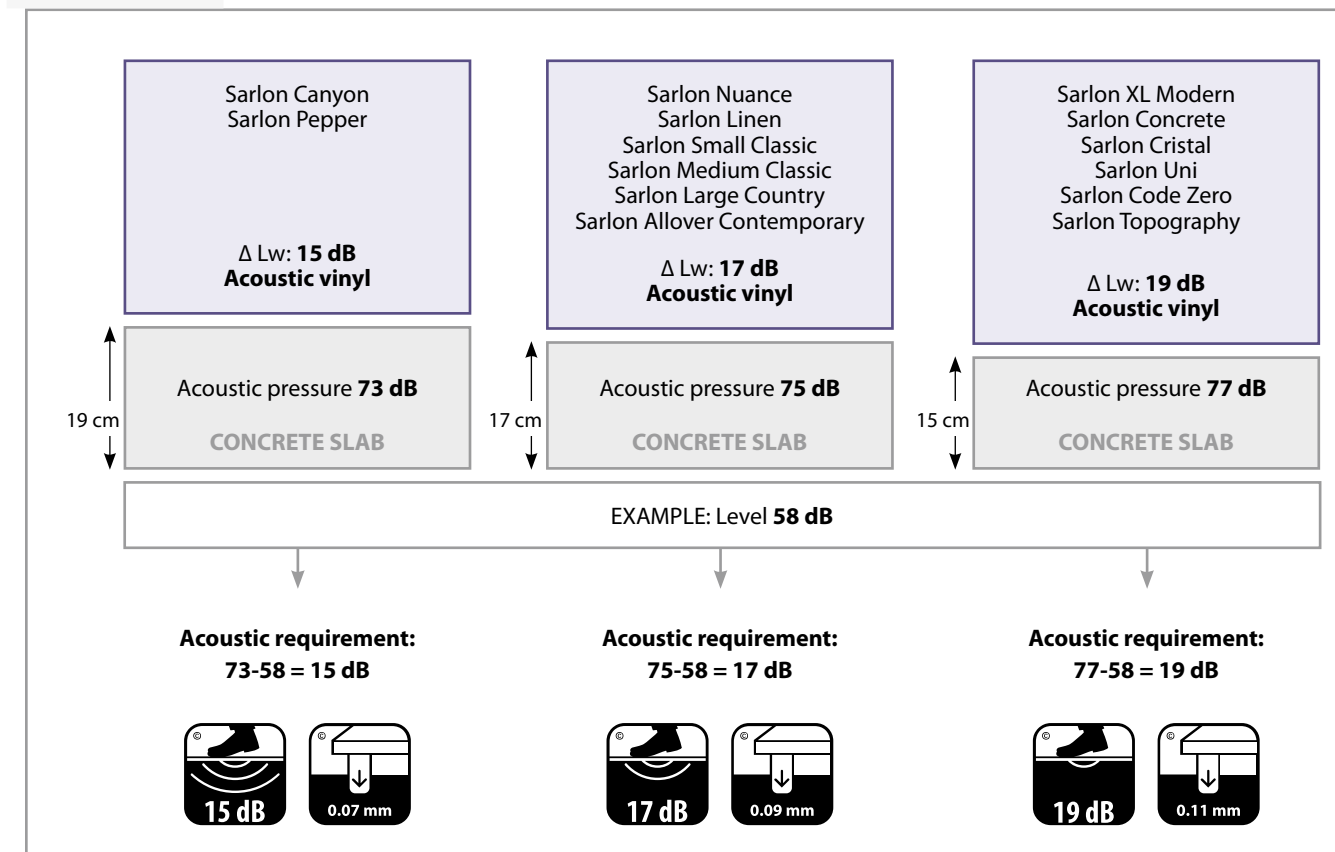
Impact sound made on the floor in one room is transmitted through the floor into rooms below.

To measure the impact sound reduction achieved by a floor covering, impact noise is generated with a hammer machine directly onto the concrete floor slab in an emission room and the sound level (S1) is recorded in the reception room below.

The floor covering is then placed on the concrete slab. The same impact noise is made on the floor covering, and the new sound level (S2) is recorded. The impact sound reduction (EN ISO 717-2) is the difference, measured in decibels, between the two sound levels recorded. The impact sound reduction of Forbo's acoustic project vinyl ranges from 15 to 19 dB.

Adapt the floor covering to the building

The thickness of the concrete slab on which the acoustic floor coverings are fitted determines the minimum acoustic rating necessary for the floor covering to achieve the desired acoustic performance. Forbo is proud to offer the widest choice of acoustic vinyl floor coverings in one collection for all types of subfloors.



In-room impact noise

Airborne sound inside a room – ambient noise – is generated by impact noise in the room itself.

To measure in-room impact noise, noise pressure is measured inside the room where the impact sound is generated, according to the standard NF-S 31-074. The measurements are classified into various categories, with Class A defining the best-performing floor coverings. All Forbo's acoustic project vinyl collections are in Class A.

CLASS	LEVEL $L_{n,e,w}$ IN dB	Floor covering
A	$L_{n,e,w} < 65$	• cushion vinyls • acoustic project vinyls
B	$65 \leq L_{n,e,w} < 75$	• resilient floor coverings, compact project vinyls
C	$75 \leq L_{n,e,w} < 85$	• hard floor (laminates, wood, stone)
D	$85 \leq L_{n,e,w}$	• hard floor floating installation

In-room impact noise (NF-S 31-074)



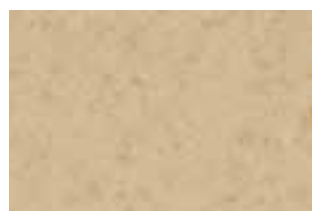
sarlon® canyon

Inspired by the natural colour
Sarlon Canyon gives you the
option to create floors that
come to life. With a range of
bright colours, any space can
become more vibrant and
unique.

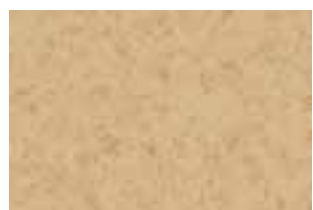
* Also available in Canyon Compact 2mm



Van Rooijen Nourbakhsh Architecten B.V.



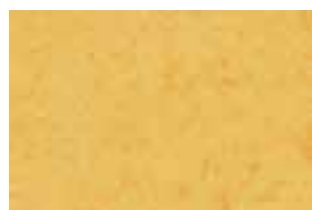
432203 | sand



432213 | beige



432226 | fuchsia



432205 | yellow



432208 | lime (43C2208*)



432218 | light green



432238 | grey green



432207 | grey blue



432211 | light grey (43C2211*)



432219 | dark grey (43C2219*)



432266 | red



432246 | orange



432228 | green



432217 | light blue



432227 | medium blue
(43C2227*)



432247 | purple



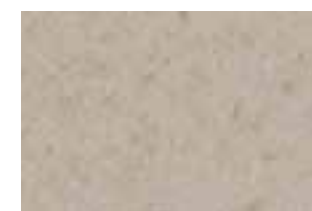
432237 | dark blue



432229 | anthracite



432200 | ivory (43C2200*)



432201 | linen (43C2201*)



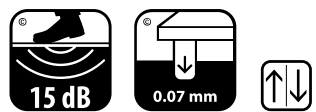
432214 | taupe (43C2214*)



432244 | chocolate



432209 | medium grey
(43C2209*)

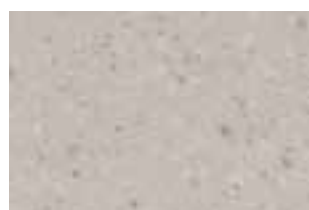


sarlon[®] pepper

A spicy range of earth-toned designs that create more natural surroundings. Peppered with just enough colour, the design has a moving effect making the Sarlon Pepper line easy to combine with any surroundings.



432311 | light grey



432300 | ivory



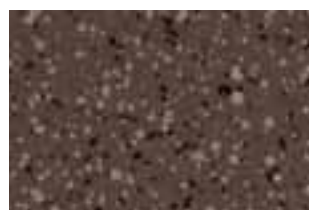
432312 | medium grey



432314 | taupe



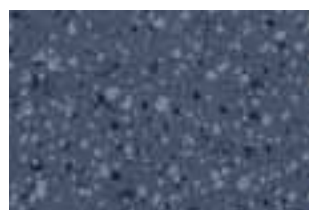
432322 | dark grey



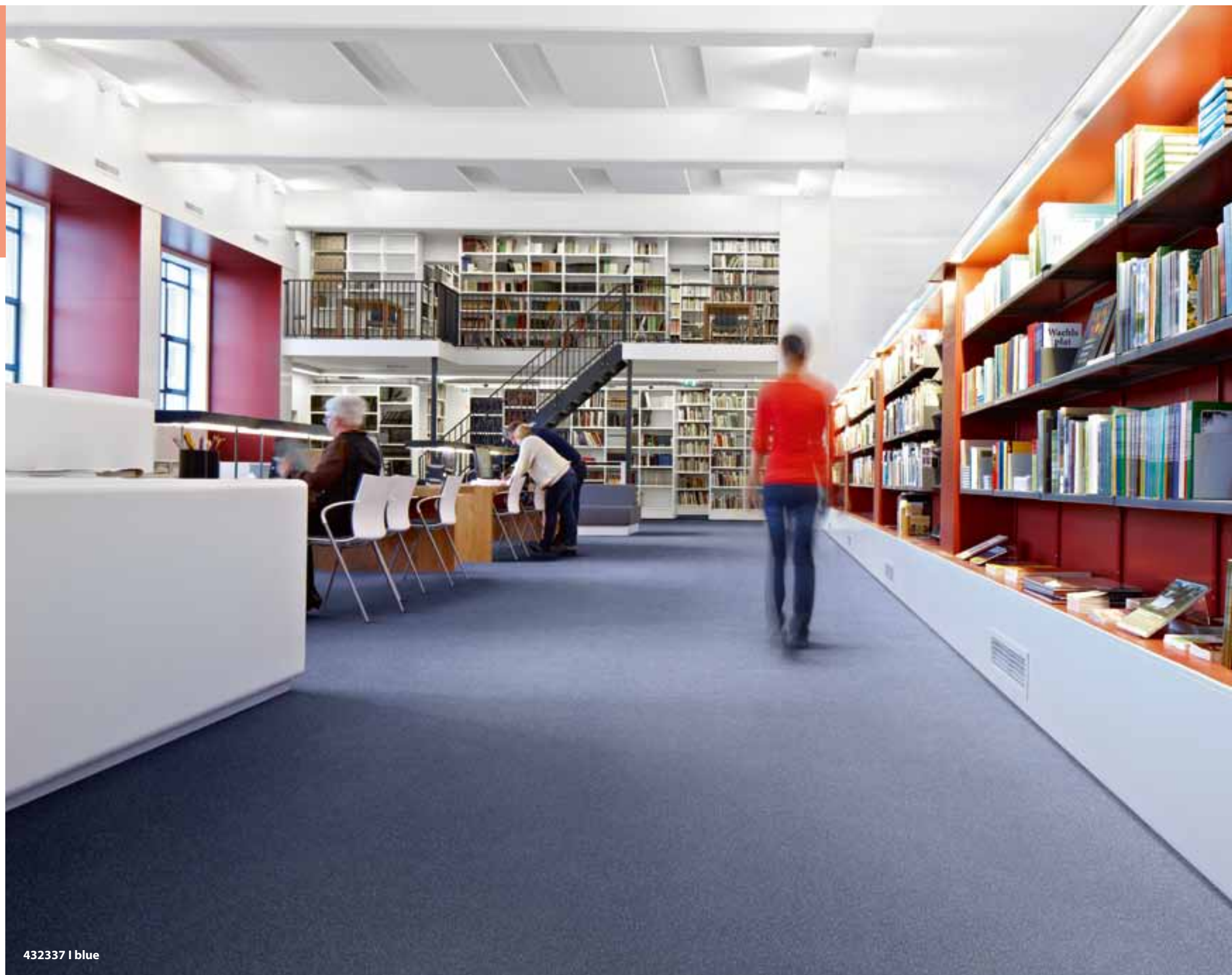
432344 | chocolate



432319 | anthracite



432337 | blue



432337 | blue



sarlon® nuance



A smooth, subtly coloured design mixed with bold colours expresses individuality. It's the ideal range for most any interior and creates a welcoming feel.



436612 | light grey



436619 | medium grey



436666 | red



436603 | beige



436608 | pistachio



436658 | green



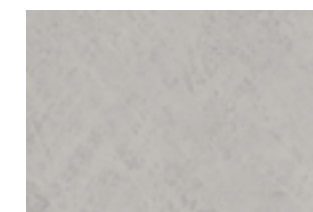
436611 | grey beige



436614 | taupe



436624 | chocolate



436601 | pearl



436639 | dark grey



436699 | black



436607 | grey blue



436637 | blue



436647 | dark blue

436611 | grey beige

436637 | blue

Archikon Architekten



sarlon® linen

Smooth, elegant and sophisticated with a 3D design and tactile look that feels like home. The Sarlon Linen range gives rooms a dynamic look and feel with a refined touch.



436501 | pearl

436529 | anthracite



436500 | ivory



436503 | beige



436514 | taupe



436501 | pearl



436502 | light grey



436509 | medium grey



436519 | dark grey



436529 | anthracite



436557 | dark blue



436544 | chocolate



sarlon® wood range



436214 | golden

sarlon® wood large country



Our lively wood-based range contains two eye-catching designs. If you want to create a warm, comfortable experience, Sarlon Wood Large Country is right for you.

sarlon® wood allover contemporary



Sarlon Wood Allover Contemporary can be used in a wide range of surroundings. Whether the room is colourful or has a more natural feel, this range will fit right in to create an uplifting, warm and enchanting setting.

sarlon® wood medium classic



Natural wood is always an excellent choice. Sarlon Wood Medium Classic is no exception. As if it came straight from the forest, it gives any surroundings a natural, warm and welcoming feeling.

sarlon® wood small classic



The natural colours of Sarlon Wood Small Classic bring nature indoors. If you're looking to create a bright, clean and uncomplicated look and feel, this warm and welcoming design is ideal.



436163 | light



436252 | dust



436383 | natural



436213 | natural



436162 | medium



436223 | ecru



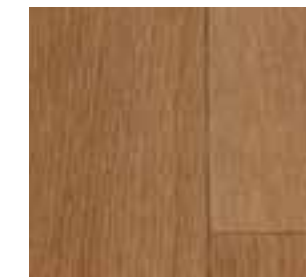
436393 | light



436214 | golden



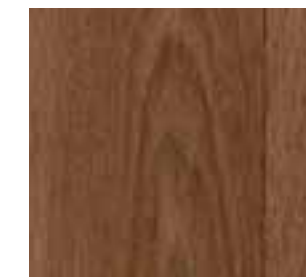
436222 | carbon



436334 | medium oak



436233 | honey



436394 | dark



436234 | medium



sarlon® wood XL modern

If your space requires a classic, natural and a timeless feeling, Sarlon Wood XL Modern offers just that. This range will bring out the authentic, warm feeling of rooms.



438420 | clay



438431 | natural



438422 | carbon



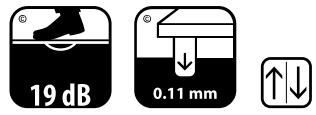
438423 | ecru



438429 | ebony



438431 | natural



sarlon[®] concrete



Sarlon Concrete is designed to bring out earth and mineral tones for a more modern office, conference or educational environment. Understated and stylish, but still durable, this contemporary range enhances smooth clean lines.



433731 | natural



433720 | clay



433723 | ecru



433721 | cloud

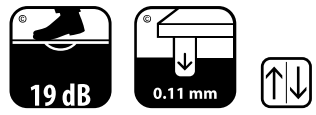


433712 | storm



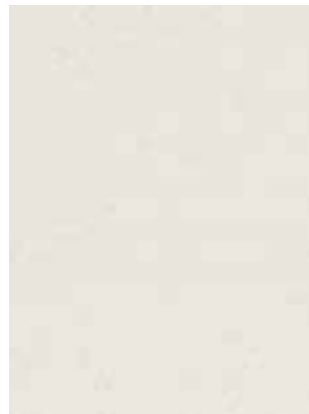
433722 | carbon

433721 | cloud



sarlon[®] cristal

A sparkling design range suited for more bright and modern locations. Sarlon Cristal is designed with special characteristics to bring its surroundings in a lively, yet sophisticated, manner.



433800 | white



433801 | pearl



433819 | medium grey



433899 | black



433811 | grey beige



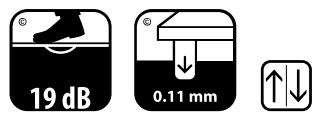
433814 | taupe



433824 | chocolate

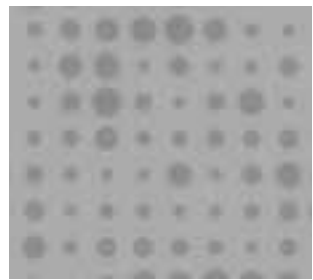


433824 | chocolate

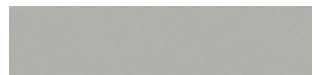


sarlon® code zero

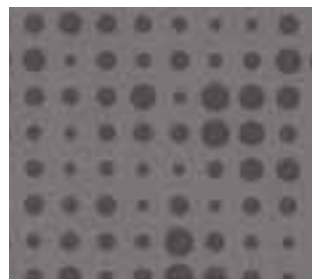
sarlon® uni



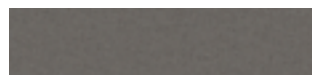
433201 | pearl



430801 | pearl



433219 | medium grey



430819 | medium grey



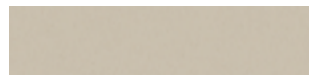
433229 | dark grey



430829 | dark grey



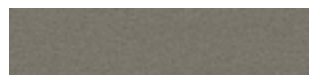
433211 | grey beige



430811 | grey beige



433214 | taupe



430814 | taupe



433224 | chocolate



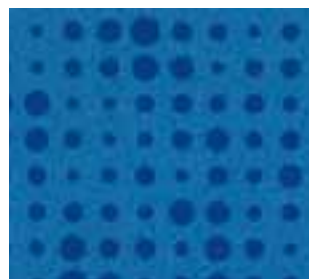
430824 | chocolate



433247 | purple



430847 | purple



433217 | blue



430817 | blue



Van Rooijen Nourbakhsh Architecten B.V.

Sarlon Code Zero

Movement and colour are this design's key elements.

Although the pattern can easily be combined with other ranges, like Sarlon Uni, on its own, Sarlon Code Zero will bring any surrounding to life.

Sarlon Uni

With a wide range of colours, you can create vibrant surroundings. Mix and match. Combine and play. Let your imagination take over.



433248 | turquoise



430848 | turquoise



433208 | lime



430808 | lime



433205 | yellow



430805 | yellow



433226 | orange



430826 | orange

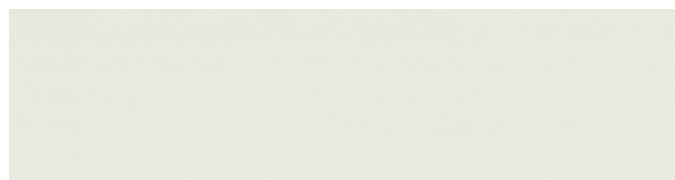


433236 | red



430836 | red

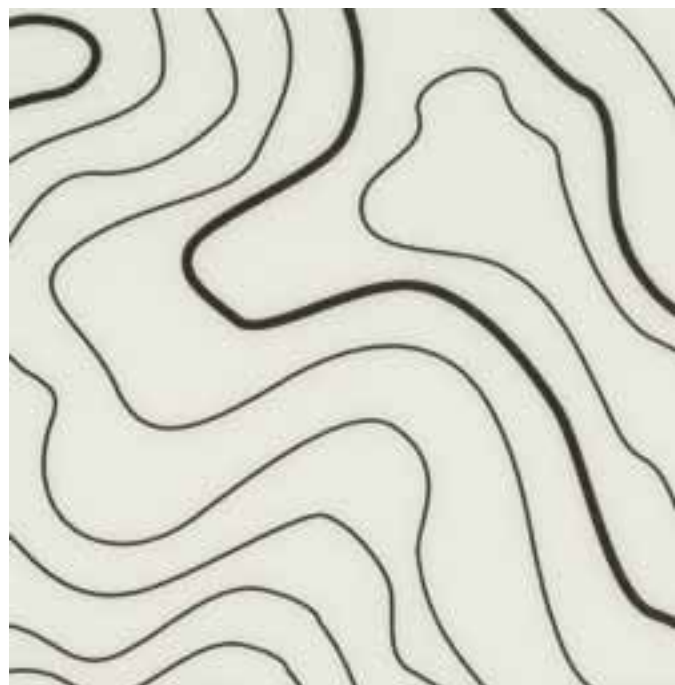
With this design you'll certainly make a statement. Sarlon Topography let's you create your own, attractive landscape throughout the room. A special, moving-line design inspired from the land contours give you a new experience in any large space. Sarlon Topography can be combined with our black & white Sarlon Uni design.



430800 | white



430899 | black



433910 | white



430899 | black

433910 | white

The perfect match for every application

The specific know how developed over the past year in acoustic products makes all of the 3 ranges best in class, with the best balance impact sound reduction and indentation performance. The combined product structure and PUR varnish finish makes the products highly resistant to traffic, retaining “new appearance” over the years.

PUR varnish

The PUR varnish applied on top of the product makes the product highly stain resistant, very easy to clean and lasting for long. No wax needed for the entire lifespan of the product, reducing considerably cost and environmental impact in maintaining the product.

Products structure

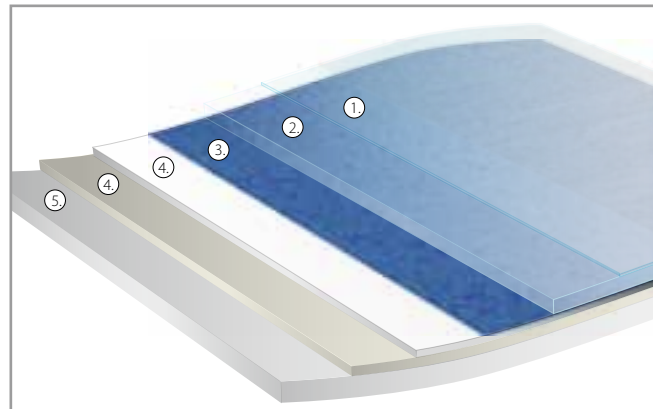
The transparent wear layer, or with particles for Cristal design, ensures a maximal wear resistance and maintain the design. A non woven, fully impregnated, glass fleece layer ensures dimensional stability. The unique foam backing brings the acoustic sound reduction (from 15dB up to 19dB) while guarantee the best in class indentation performance.

Canyon Compact 2mm

When a perfect design match is needed, there are eight items in the Sarlon Canyon 15dB range which are also available in a compact version. The item numbers are indicated next to the colour sample. The Canyon Compact 2mm benefits from the same PUR varnish treatment and the same product structure for the top part of the product. The backing layer is a thin embossed compact layer, which allows easy installation.

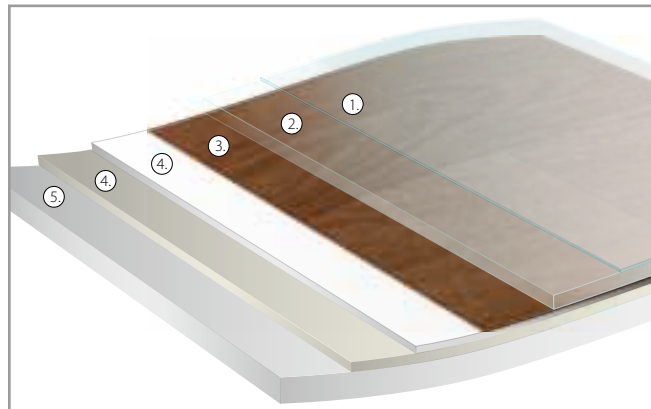
Sarlon 15dB

1. PUR lacquered surface, slip resistance rating R10
2. Pure PVC wear layer of 0.7mm – abrasion group T –
3. Design printed with environmentally friendly water-based inks
4. Double compact layer with non-woven glass fiber carrier achieving indentation of 0.05mm
5. Foam backing achieving an outstanding impact reduction of 15dB



Sarlon 17dB

1. PUR lacquered surface, slip resistance rating R9
2. Pure PVC wear layer of 0.67mm – abrasion group T –
3. Design printed with environmentally friendly water-based inks
4. Double compact layer with non-woven glass fiber carrier achieving indentation of 0.07mm
5. Foam backing achieving an outstanding impact reduction of 17dB



Designed with our environment in mind

Forbo's dedication to protecting the environment and investing in a sustainable future also applies for this acoustic series. The Sarlon collection is manufactured using green energy and modern production technology that reduces the processes involved to a minimum. The design of this range has much lower ink consumption thanks to our new engraving technology. But we are also proud of our Water Treatment Station. It clears 100% of the ink components from the water used for production.

Our acoustic range conforms to all standards, including the new VOC emission classes. And, this range is made in Europe for mostly European markets, reducing transport related carbon emissions. The easy cleaning, minimum demand for detergents and long lasting performance of our products also contribute to a better environment in many ways.

Compliance Plus

As a principle, Forbo works to “Compliance Plus” – a commitment set by our own standards and one that goes beyond government regulations and requirements. We also see investments in people, processes and products that further improve our environmental performance as investments for the future, not a cost of doing business. We use independent Life Cycle Assessments to constantly find ways to measure and minimize the environmental impact of our products from raw material extraction to end of life.

Reducing cleaning & maintenance

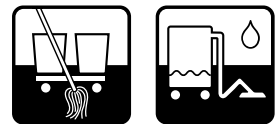
Reducing cleaning is another element in sustainability and performance. The PUR finish makes our acoustic products easy to clean and their lasting performance means Sarlon will stay in excellent condition, even under heavy traffic conditions. In addition, installing one of our entrance flooring products will help cut dirt and moisture penetration by up to 90%.



Forbo FloorCare method

The Forbo project vinyl collections are easy to clean and maintain, thanks to their smooth and highly durable PUR coated surface.

Cleaning after installation

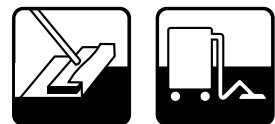


- Sweep, dust, mop or vacuum floor to remove loose soil
- Clean the floor with cleaner and a mop
- Pick up dirty water with a wiper and mop or a water vac
- Rinse with clean water and a mop
- Allow the floor to dry



- When intensive traffic is expected:
- Spray buff the floor with a rotary machine and a suitable pad

Regular cleaning



- Wipe with a dust mop and dust cloth, or vacuum the floor



- Remove spots with a damp mop

Periodic cleaning



- Spray clean with a rotary machine and a buffing pad, use spray where necessary

Occasional maintenance



- Scrub with cleaner, a rotary machine and a scrub pad
- Pick up dirty water with a wiper and mop or a water vac
- Rinse with clean water and a mop
- Allow the floor to dry



- When intensive traffic is expected:
- Spray buff the floor with a rotary machine and a suitable pad

Products

Forbo Cleaner is an effective and pH neutral cleaner.

For more information: www.forbo-flooring.com.

If you want to use alternative products, please consult your local supplier.

Technical specifications

Sarlon 15 dB, 17 dB and 19 dB meets the requirements of EN 14041 and EN 651
Canyon compact meets the requirements of EN 14041 and EN 649

		Sarlon 15 dB	Sarlon 17 dB	Sarlon 19 dB	Canyon compact	
	Total thickness	EN 428 (ISO 24346)	2.6 mm	3.0 mm	Printed 3.4 mm Cristal 3.75 mm	2.0 mm
	Wear layer thickness	EN 429 (ISO 24340)	0.70 mm	0.67 mm	Printed 0.67 mm Cristal 0.75 mm	0.70 mm
	Total weight	EN 430 (ISO 23997)	2,700 g/m ²	2,500 g/m ²	Printed 2,900 g/m ² Cristal 3,000 g/m ²	2,400 g/m ²
	Impact sound reduction	EN ISO 717-2	ΔLw = 15 dB	ΔLw = 17 dB	ΔLw = 19 dB	ΔLw = 5 dB
	In-room impact noise	NF 5 31-074	Ln,e,w < 65 dB, Class A	Ln,e,w < 65 dB, Class A	Ln,e,w < 65 dB, Class A	-
	Sound absorption	EN ISO 354 EN ISO 11654	α _w = ± 0,05	α _w = ± 0,05	α _w = ± 0,05	-
	Residual indentation (maximum measured value)	EN 433 (ISO 24343-1)	0.07 mm	0.09 mm	0.11 mm	0.02 mm
	Average measured value		0.05 mm	0.07 mm	0.08 mm	-
	Requirement		≤ 0,20 mm	≤ 0,20 mm	≤ 0,20 mm	≤ 0,10 mm
	Slip resistance	DIN 51130	R10	R9	R9	R10
	Abrasion resistance	EN 660-2 (ISO 24338)	T	T	T	T
	Specifications		EN 651 (ISO 11638)	EN 651 (ISO 11638)	EN 651 (ISO 11638)	NF EN 649 (ISO 10582)
	Commercial use	EN 685 (ISO 10874)	34	34	34	34
	Industrial use	EN 685 (ISO 10874)	42	42	42	43
	Packaging		Rolls	Rolls	Rolls	Rolls
	Roll length	EN 426 (ISO 24341)	25 m	25 m	25 m	25 m
	Roll width	EN 426 (ISO 24341)	2 m	2 m	2 m	2 m
	Castor chair resistance	EN 425 (ISO 4918)	Yes	Yes	Yes	Yes
	Furniture leg resistance	EN 424 (ISO 16581)	compliant	compliant	compliant	compliant
	Dimensional stability	EN 434 (ISO 23999)	< 0.10 %	< 0.10 %	< 0.10 %	< 0.10 %
	Requirement		≤ 0.40 %	≤ 0.40 %	≤ 0.40 %	≤ 0.40 %
	Colour fastness to light	EN ISO 105-B02	7	7	7	7
	Requirement		≥ 6	≥ 6	≥ 6	≥ 6
	Stain resistance	EN 423 (ISO 26987)	Good	Good	Good	Good
	Surface treatment		PUR	PUR	PUR	PUR
	Fungistatic and bacteriostatic treatments		BIOSTATIC*	BIOSTATIC*	BIOSTATIC*	-
	Emissions into air : TVOC* at 28 days	NF EN ISO 16000 (ISO 10580)	< 100 µg/m ³	< 100 µg/m ³	< 100 µg/m ³	< 100 µg/m ³
	REACH (European regulation)	1907/2006/CE	compliant (†)	compliant (†)	compliant (†)	compliant (†)
	All Sarlon products meet the requirements of EN 14041					
	Reaction to fire	EN 13501-1	B _n -s1 (†)	C _n -s1 (†)	C _n -s1 (†)	B _n -s1 (†)
	Slip resistance	EN 13893	Class DS (μ ≥ 0,30)	Class DS (μ ≥ 0,30)	Class DS (μ ≥ 0,30)	Class DS (μ ≥ 0,30)
	Body voltage	EN 1815	E ≤ 2 kV , Antistatic	E ≤ 2 kV , Antistatic	E ≤ 2 kV , Antistatic	E ≤ 2 kV , Antistatic
	Thermal conductivity	EN 12524 (EN ISO 10456)	0,25 W/(m.K), suitable for heating floors	0,25 W/(m.K), suitable for heating floors	0,25 W/(m.K), suitable for heating floors	0,25 W/(m.K), suitable for heating floors

(†) Valid on every substrate: wood, non combustible A2fl-s1 or A1fl, or on free laying (with SARLIBASE TE underlayer)

(‡) The articles (products) do not contain substances of the candidate list published by ECHA (SVHC substances of very high concern)

(§) Valid on non combustible substrate: A2fl-s1 or A1fl

* TVOC : total volatile organic compounds

The light reflectance values (LRV) can be found in our sample book and on our website. The NCS-codes per colour can also be found on our website.

Movinord

Office Concept

Λεωφ. Κηφισίας 256, Χαλάνδρι Τ.Κ. 152 31
ΤΗΛ. +30 210 6141550, 210 2532233, FAX: +30 210 2532235

Λαέρτου 22, Πυλαία, Θεσσαλονίκη, Capital Trade Center, κτίριο C
ΤΗΛ./Fax. +30 2310 472584, ΚΙΝ. +30 6947004736

info@movinord.com.gr
www.movinord.com.gr